

Telco infrastructure on water assets – What can go wrong?



Jillian Busch

Aqualift Project Delivery Pty Ltd

Service Reservoirs

Issues due to Telco antennas on and around tanks

- * EMF emission zones and access areas
- * Site security
- * Restrictive access
- * Water Quality impacts
- * WH&S concerns
- * Structural impacts

Compliance with industry best practice...?





EME Guides

- * Be available to site owners
- * Be aware of restriction zones
- * Guides that are 'Limited'


This document is marked **Limited** as some of the systems at this site cannot be identified

EME Guide


for Site Safety

RFNSA Site No: 2440001
Document Issue No: 8
Document Issue Date: 15/03/2017
Address:
Skyline Crescent
CRESCENT HEAD
NSW 2440

This evaluation does not consider all of the systems operating at this radio communications facility. The mobile carriers' equipment however, has been evaluated against the applicable Australian Standard. Visitors to this site shall note that Safe Work Procedures apply.



LIMITED

This Report was prepared by:  Kordia Solutions Pty Ltd

CAUTION


ELECTRO-MAGNETIC RADIATION

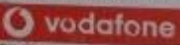
Do not enter the hazard areas shown in red and yellow

Access into red hazard area permitted only when transmitters are switched off

HAZARD AREA DETAILS & ANTENNA IDENTIFICATION

VODAFONE DIRECTIONAL ANTENNA



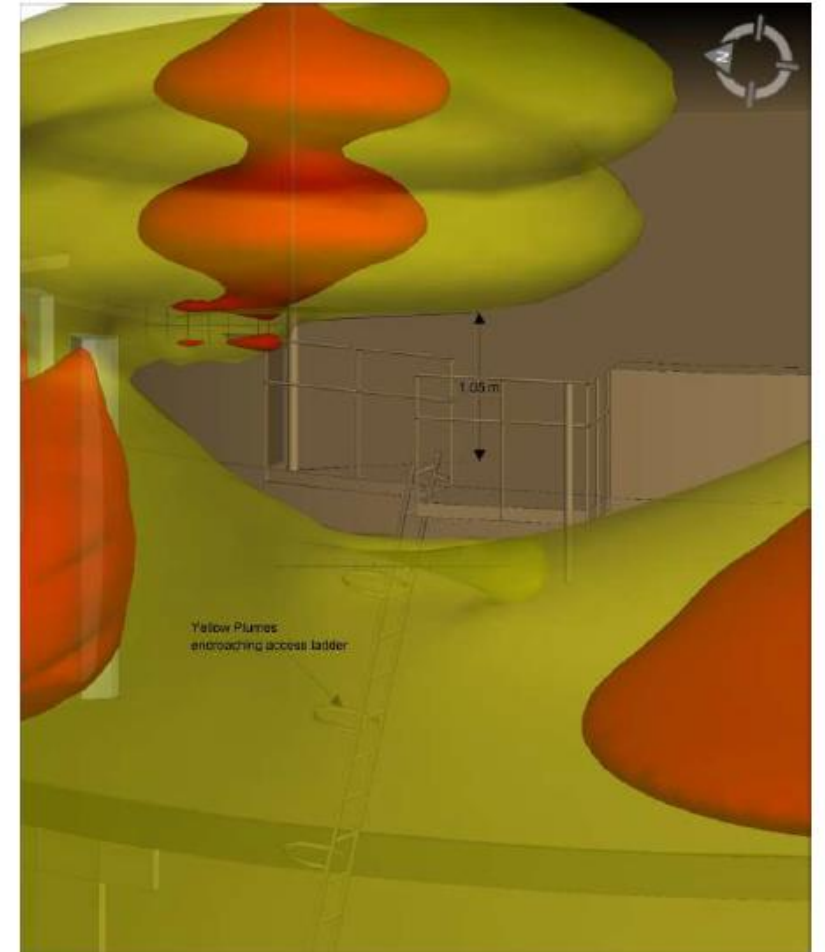
Further information can be obtained by contacting  **vodafone**

ABN 21 081 918 461

MTX Business hours number:
Freecall 24 hours 1800 683 683

DO NOT ENTER
Mpl. stay 50m/20m for Radio Frequency Workers only.

Rooftop Separation Distances



Exclusion zone Legend

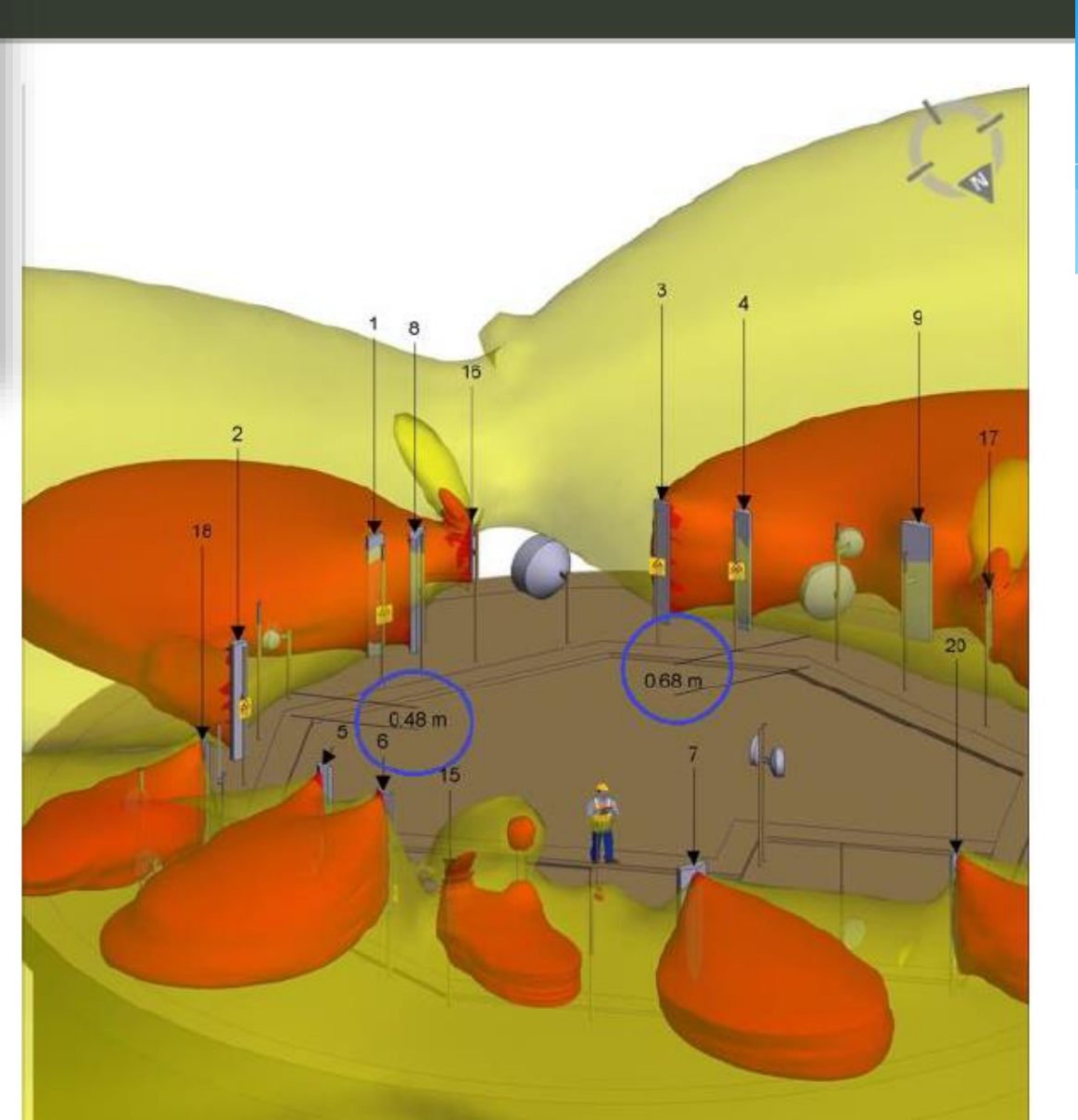
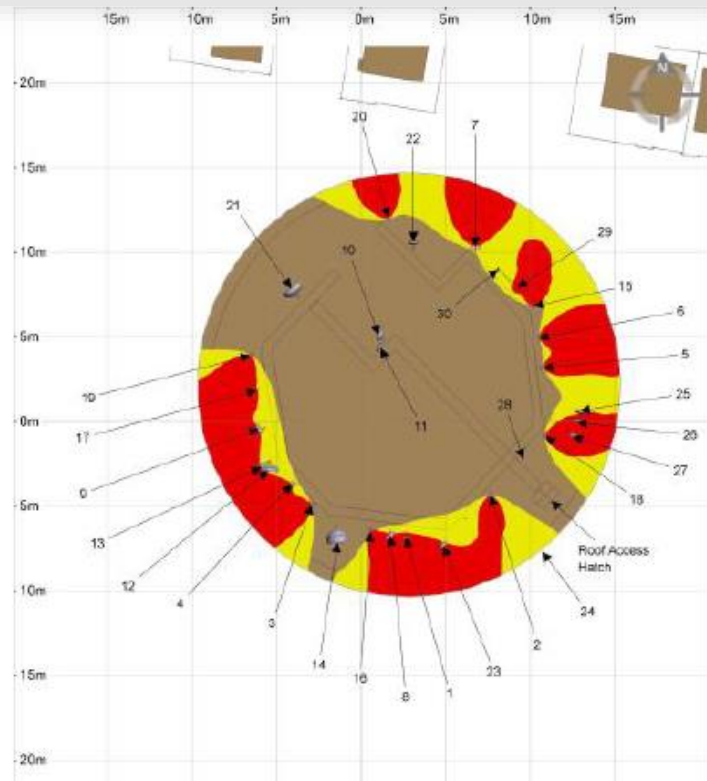
-  Areas above RPS3 public limits
-  Areas above RPS3 occupational limits

This Document is Uncontrolled when printed. See www.rfnsa.com.au for the current issue

Site No: 2440001
Issue No: 8
EBU Number: EBU20687

Issued: 15/03/2017

EME Guide - Limited - V1.1
KOS-EME-08-103
Page 14 of 20



Site security compromised



Vandal access



Telco Sub Contractors



Debris & Site Restriction



Water Quality Risk



Bird roosting areas



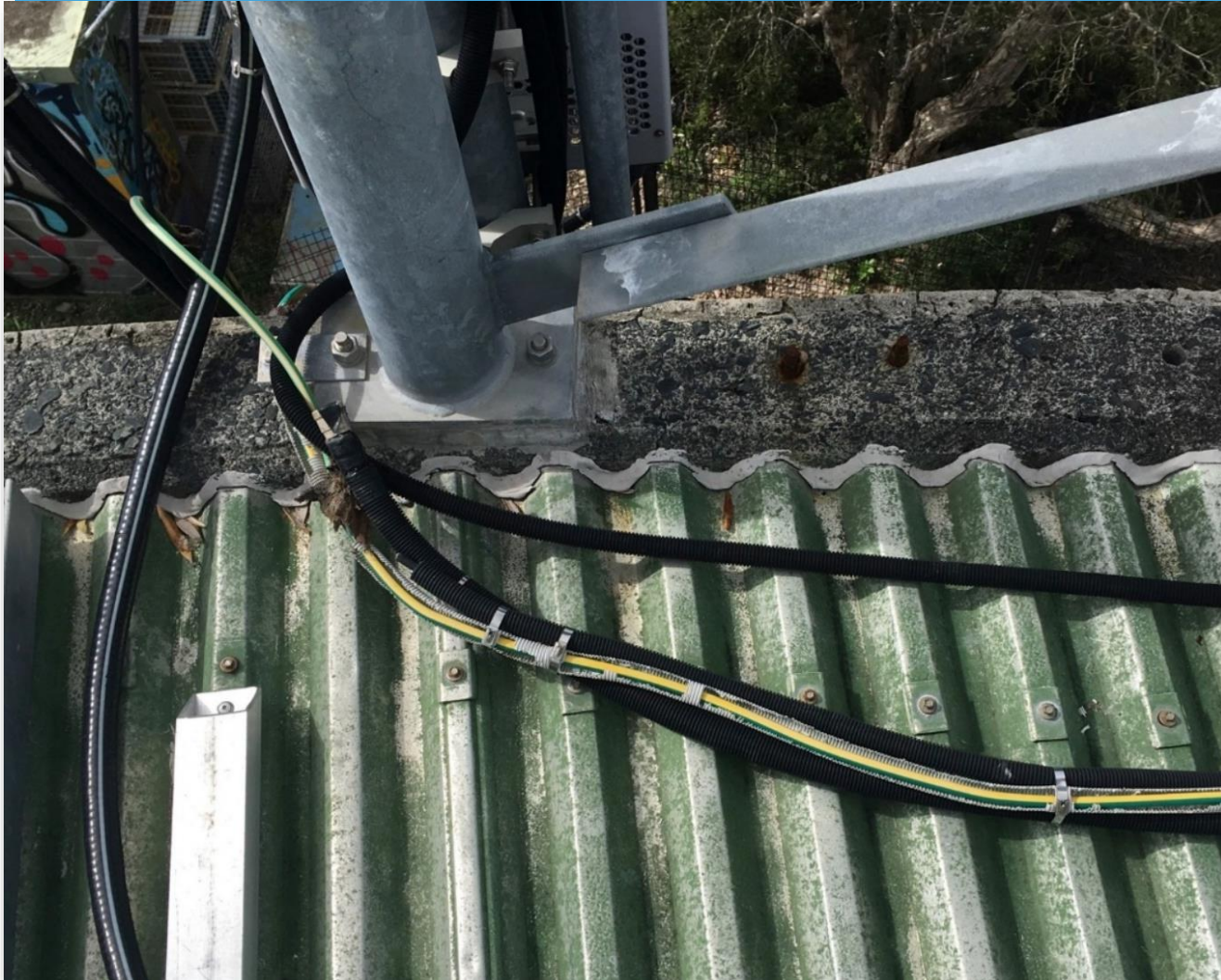


Integrity check





Ongoing maintenance

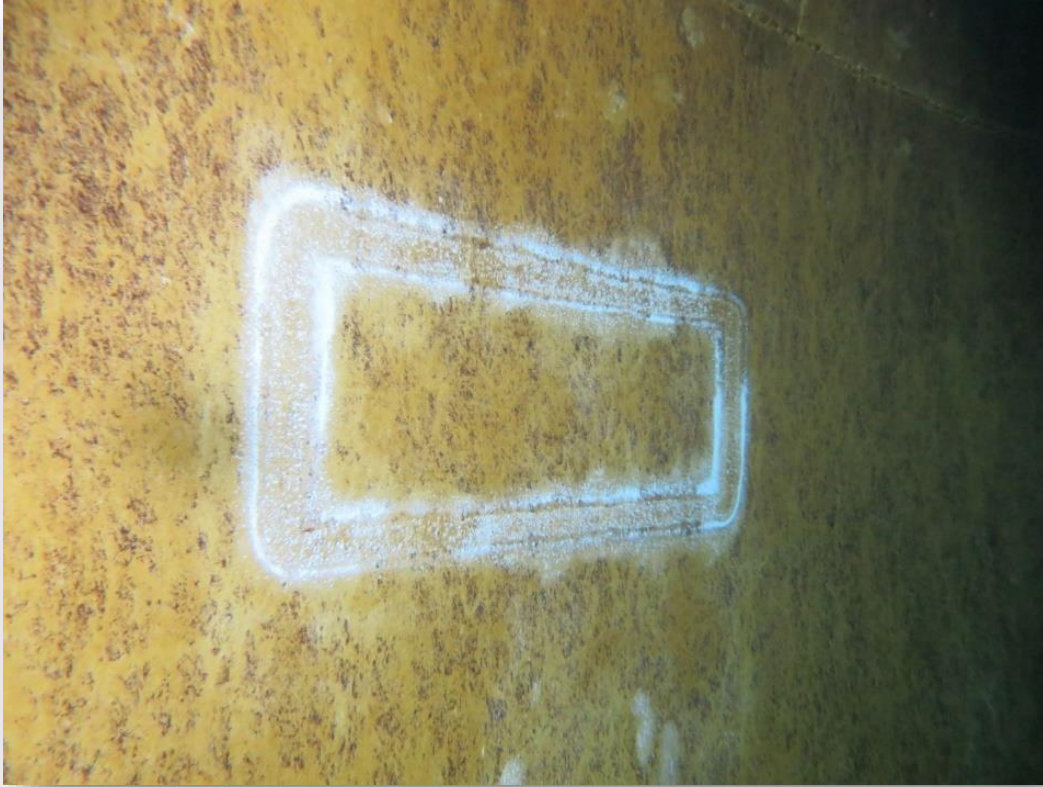


Site safety





Internal coating damaged



Damage to structures

